

2500L_EU_FL(AC02020) TRACTOR

Parts Catalogue



CONTENTS

GROUP NO	GROUP NAME	PAGE
F. TRANSMISSION		
F01010	CLUTCH HOUSING	3
F01020A	TRANSMISSION CASE	5
F01040	REAR AXLE CASE	7
F01070	DIFFERENTIAL GEAR CASE	9
F02020	CLUTCH SHAFT	11
F02090	CENTER FRAME	13
F02110A	PROPELLER SHAFT	15
F02120A	FRONT SHAFT	17
F02130A	HYDRAULIC OIL LINE, CLUTCH	19
F03010A	MAIN SHIFT DRIVE SHAFT	21
F03030	HST	23
F03040A	(RANGE SHIFT DRIVE SHAFT)	25
F05020	REAR DIFFERENTIAL	27
F06000	REAR AXLE ASSY	29
F07030A	PTO DRIVE SHAFT	31
F07070A	PTO SHAFT	33
F07080A	MID PTO	35
F08021	MAIN GEAR SHIFT FORK	37
F08022	RANGE GEAR SHIFT FORK	39
F08040A	4WD FORK	41
F08050	DIFFERENTIAL LOCK SHIFT FORK	43
F08060A	PTO GEAR SHIFT FORK	45
F10020	LIFT ARM	47
F10064	POSITION CONTROL LEVER	49
F10080	HYD VALVE	51
F10090	FEED BACK LEVER- POSITION	53
F10120A	REAR SCV(2PORT)	55
F11060	DIFFERENTIAL LOCK PEDAL	57
F11080	FRONT WHEEL DRIVE LEVER	59

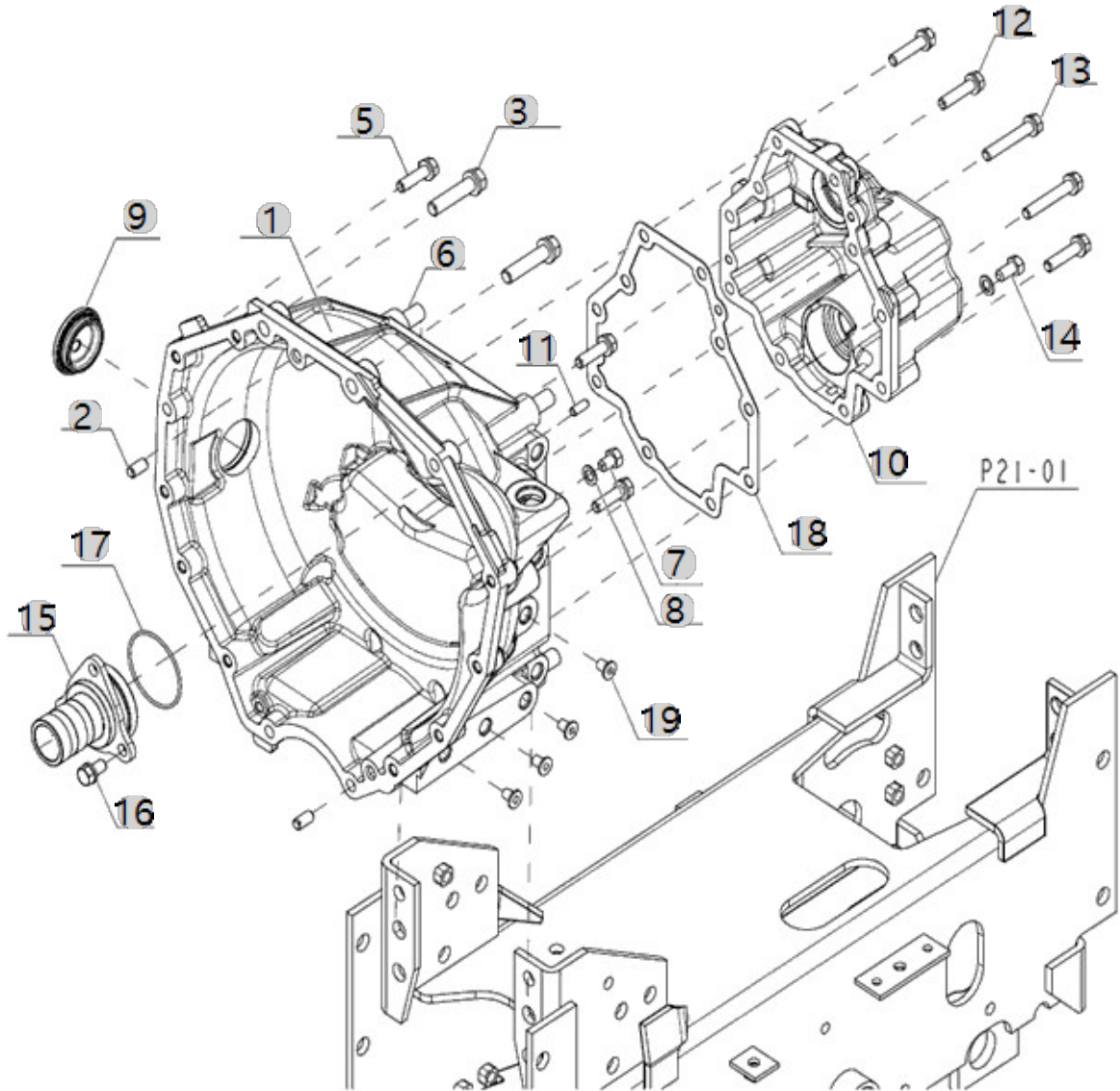
F01010

3100 MANUAL TM
(AC01020)

CLUTCH HOUSING

Year/Month

2022-12-16



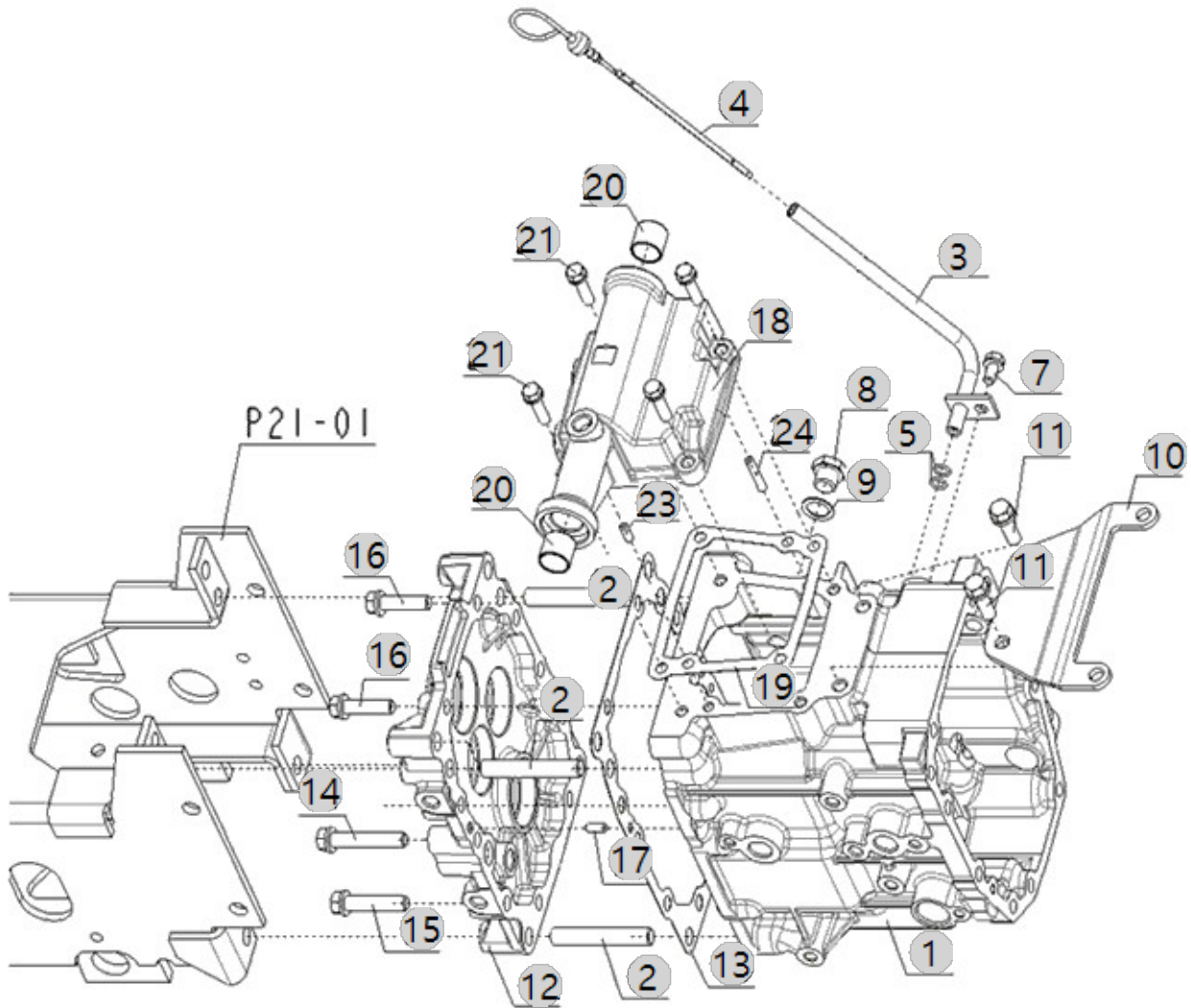
F01020A

3100 MANUAL TM
(AC01020)

TRANSMISSION CASE

Year/Month

2022-12-16



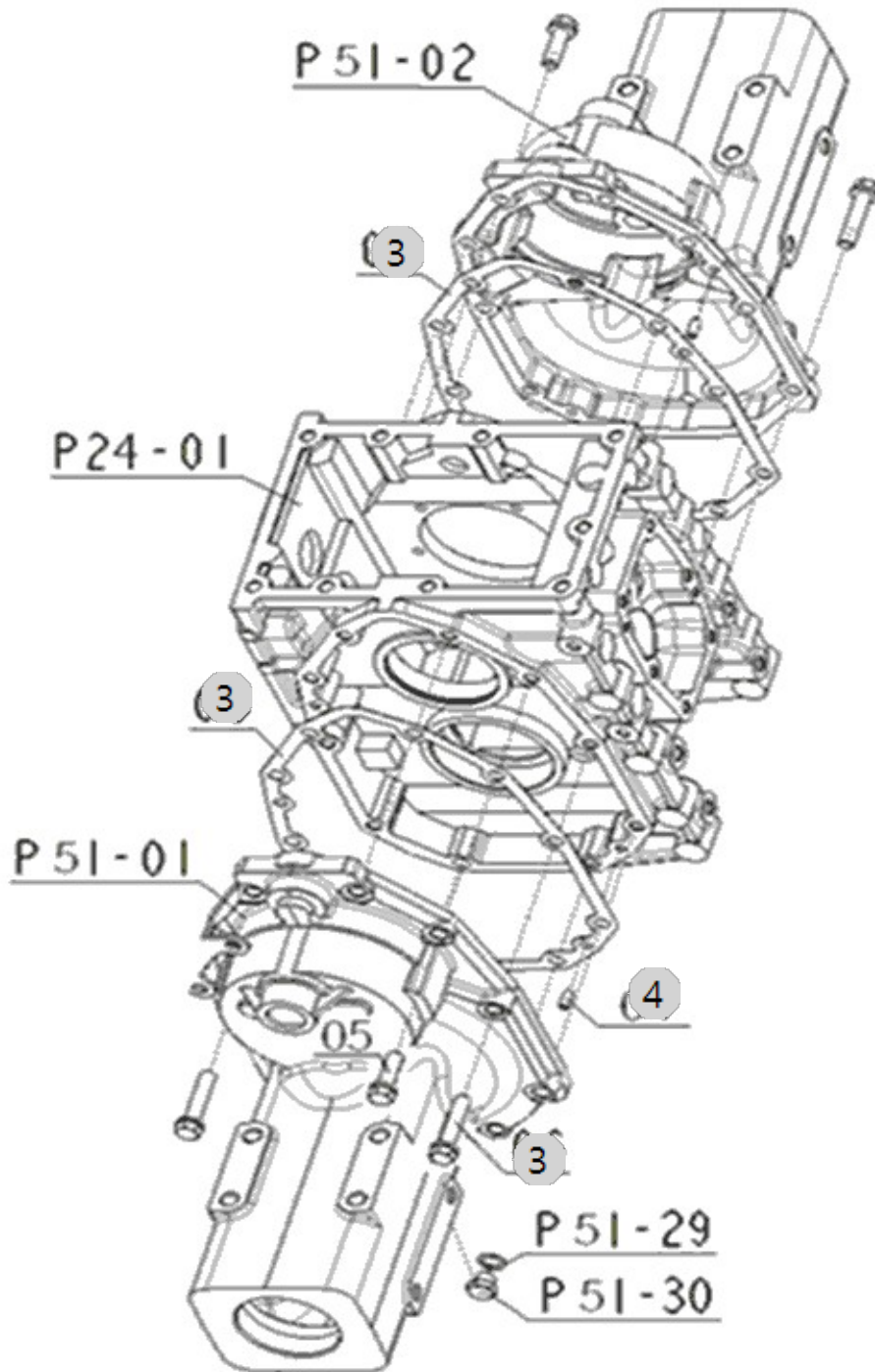
F01040

3100 MANUAL TM
(AC01020)

REAR AXLE CASE

Year/Month

2022-12-16



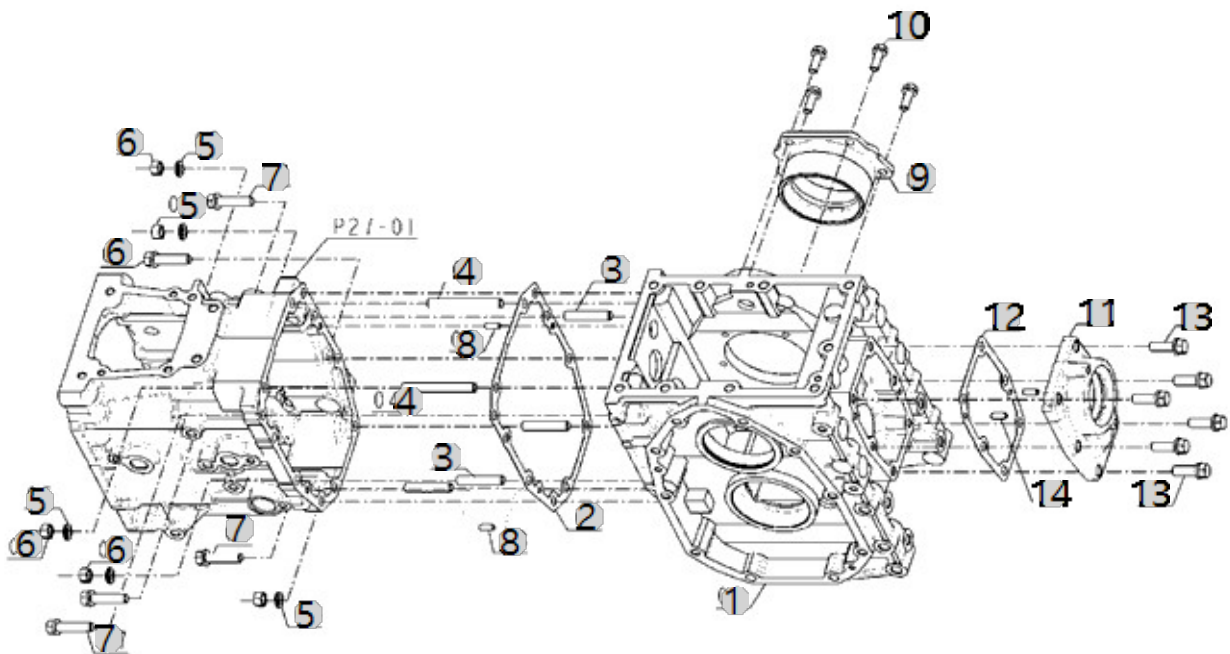
F01070

3100 MANUAL TM
(AC01020)

DIFFERENTIAL GEAR CASE

Year/Month

2022-12-16



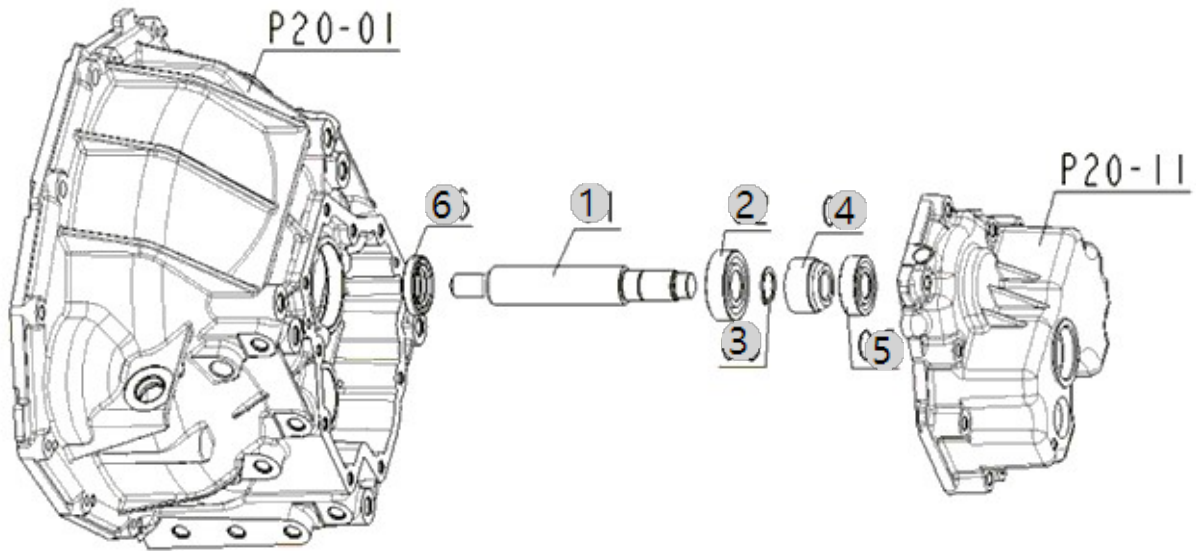
F02020

3100 MANUAL TM
(AC01020)

CLUTCH SHAFT

Year/Month

2022-12-16



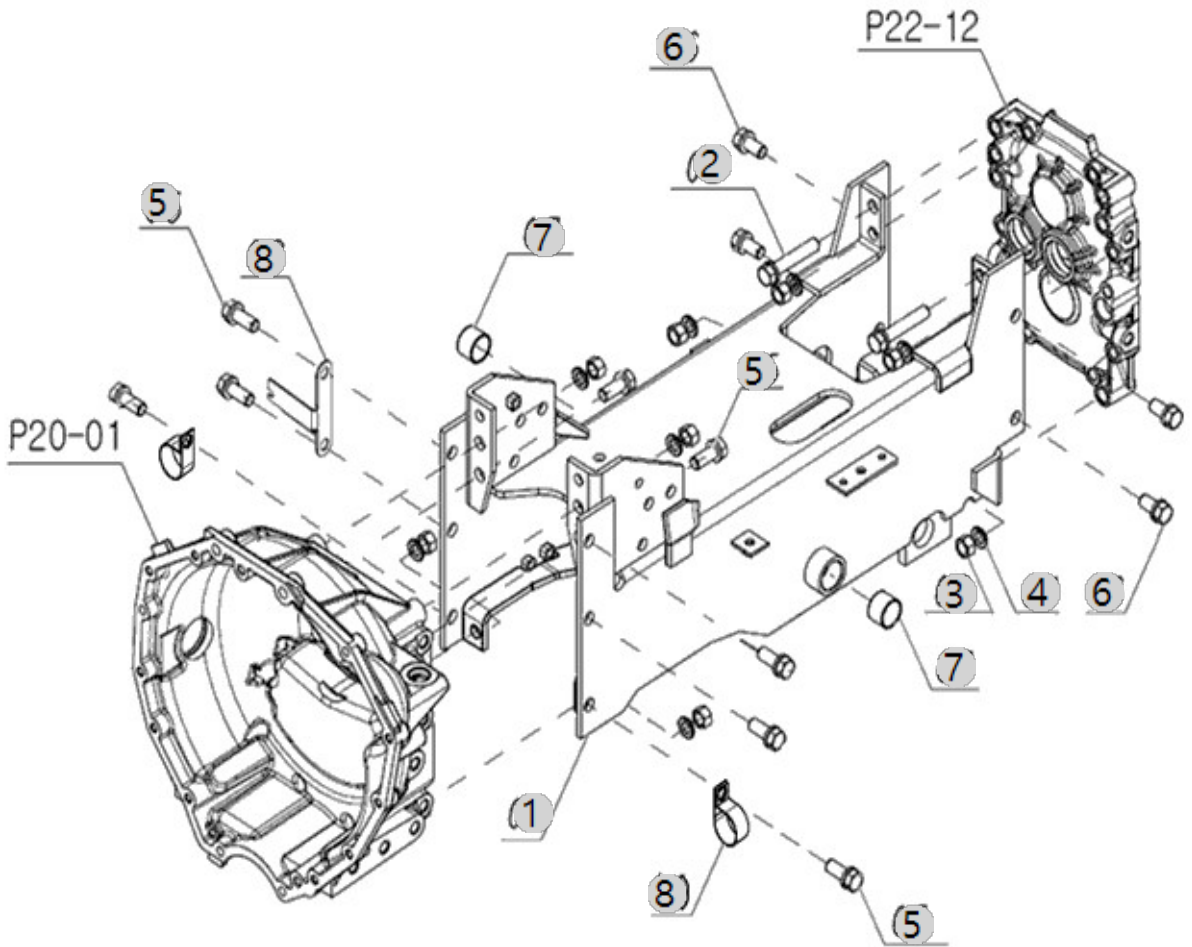
F02090

3100 MANUAL TM
(AC01020)

CENTER FRAME

Year/Month

2022-12-16



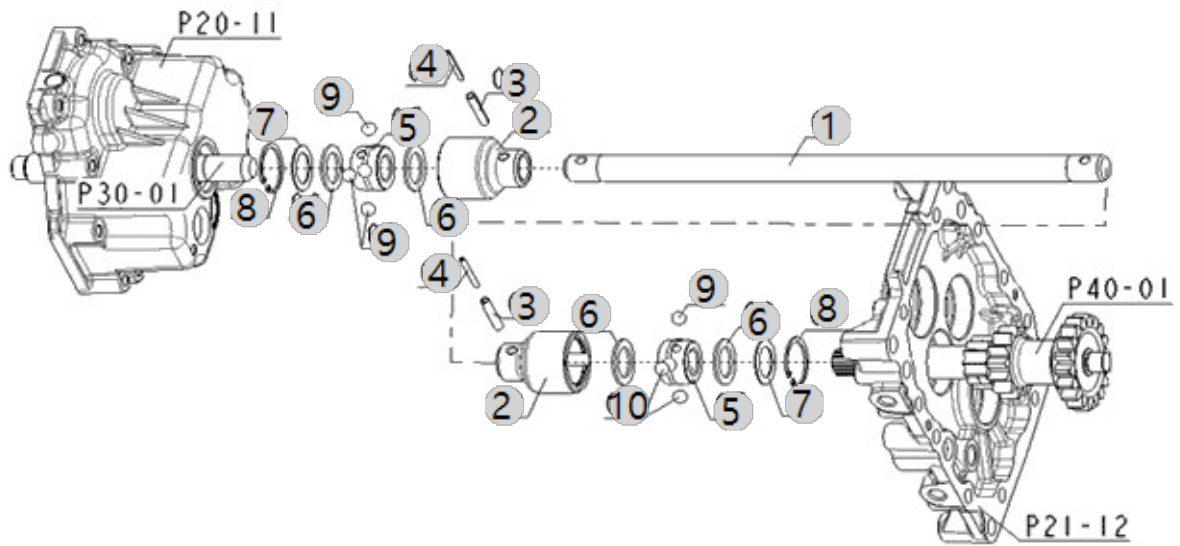
F02110A

3100 MANUAL TM
(AC01020)

PROPELLER SHAFT

Year/Month

2022-12-16



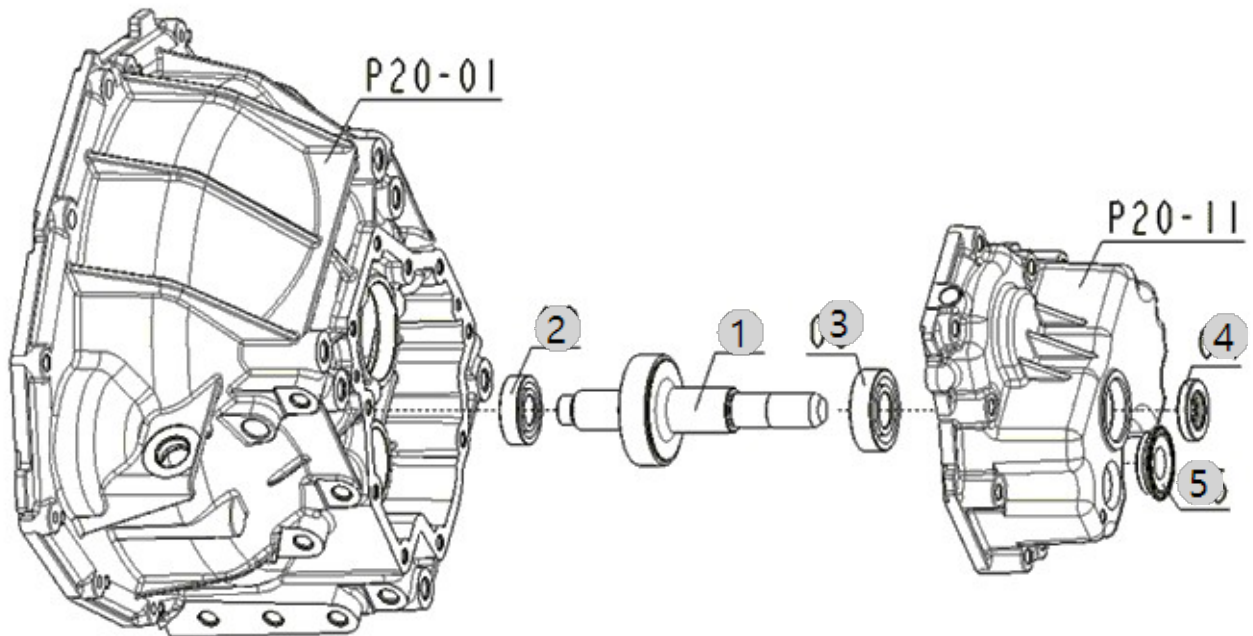
F02120A

3100 MANUAL TM
(AC01020)

FRONT SHAFT

Year/Month

2022-12-16



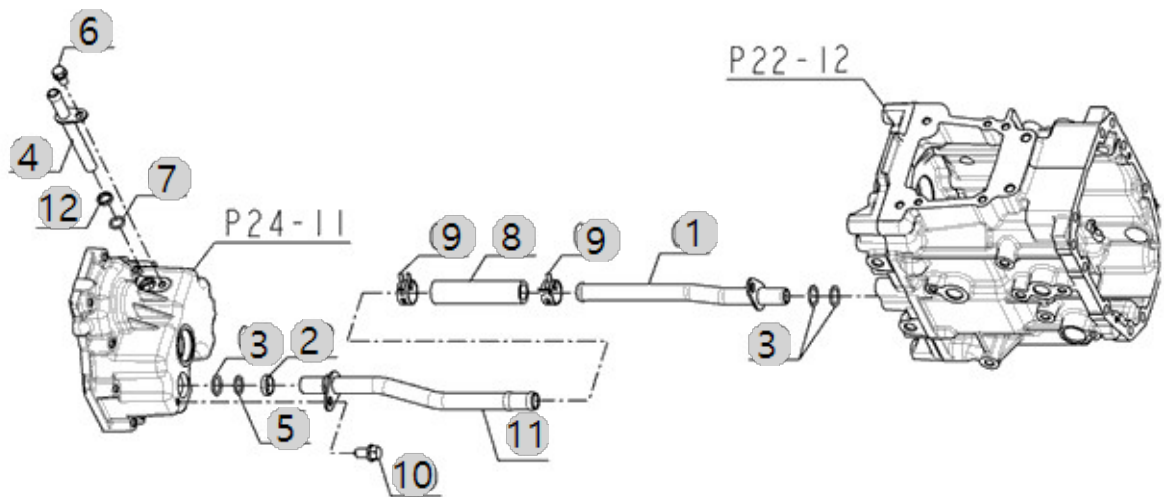
F02130A

3100 MANUAL TM
(AC01020)

HYDRAULIC OIL LINE, CLUTCH

Year/Month

2022-12-16



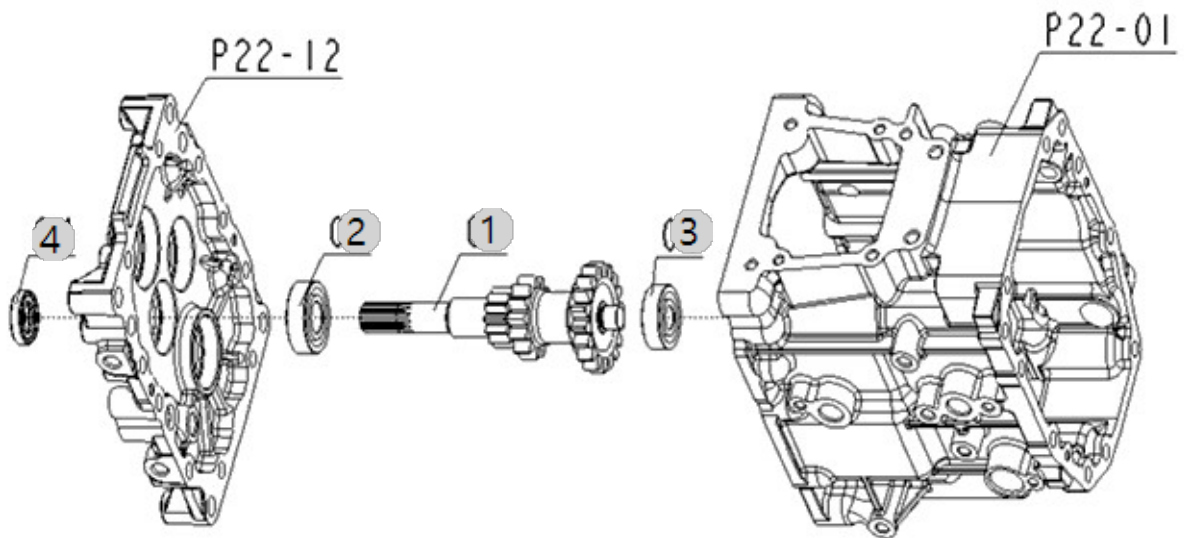
F03010A

3100 MANUAL TM
(AC01020)

MAIN SHIFT DRIVE SHAFT

Year/Month

2022-12-16



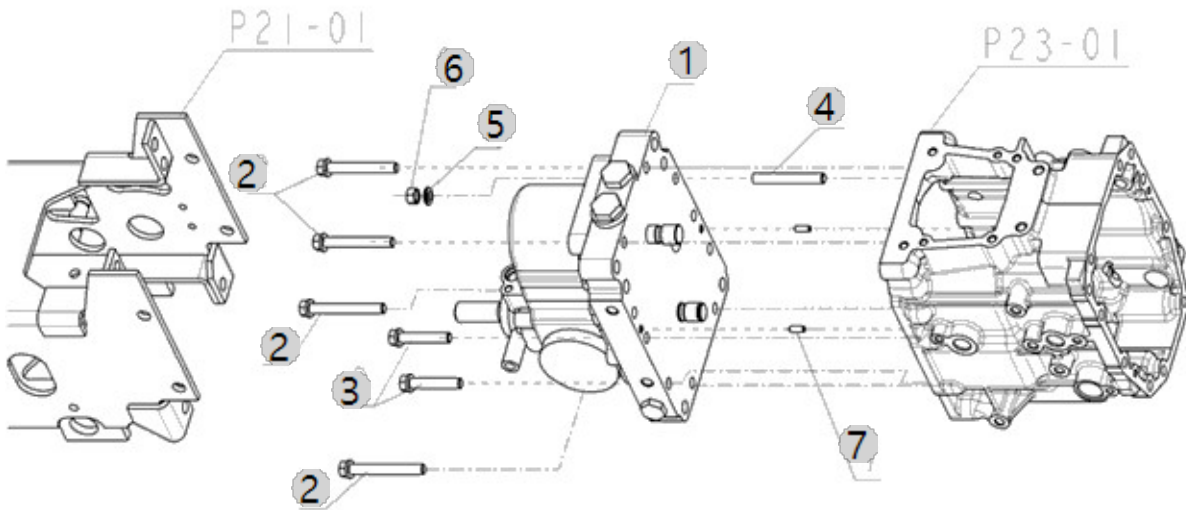
F03030

3100 MANUAL TM
(AC01020)

HST

Year/Month

2022-12-16



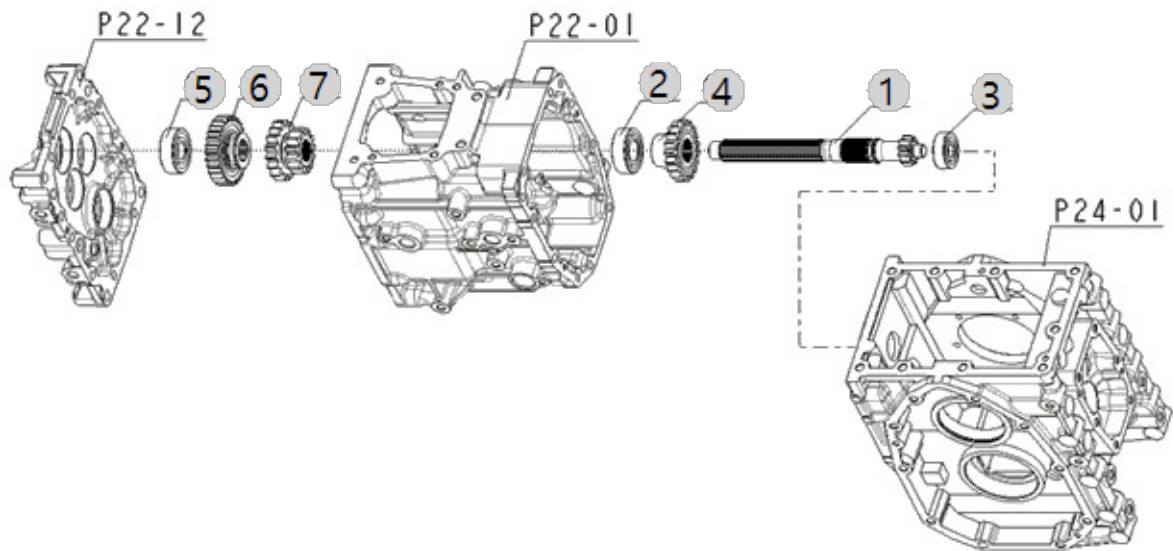
F03040A

3100 MANUAL TM
(AC01020)

(RANGE SHIFT DRIVE SHAFT)

Year/Month

2022-12-16



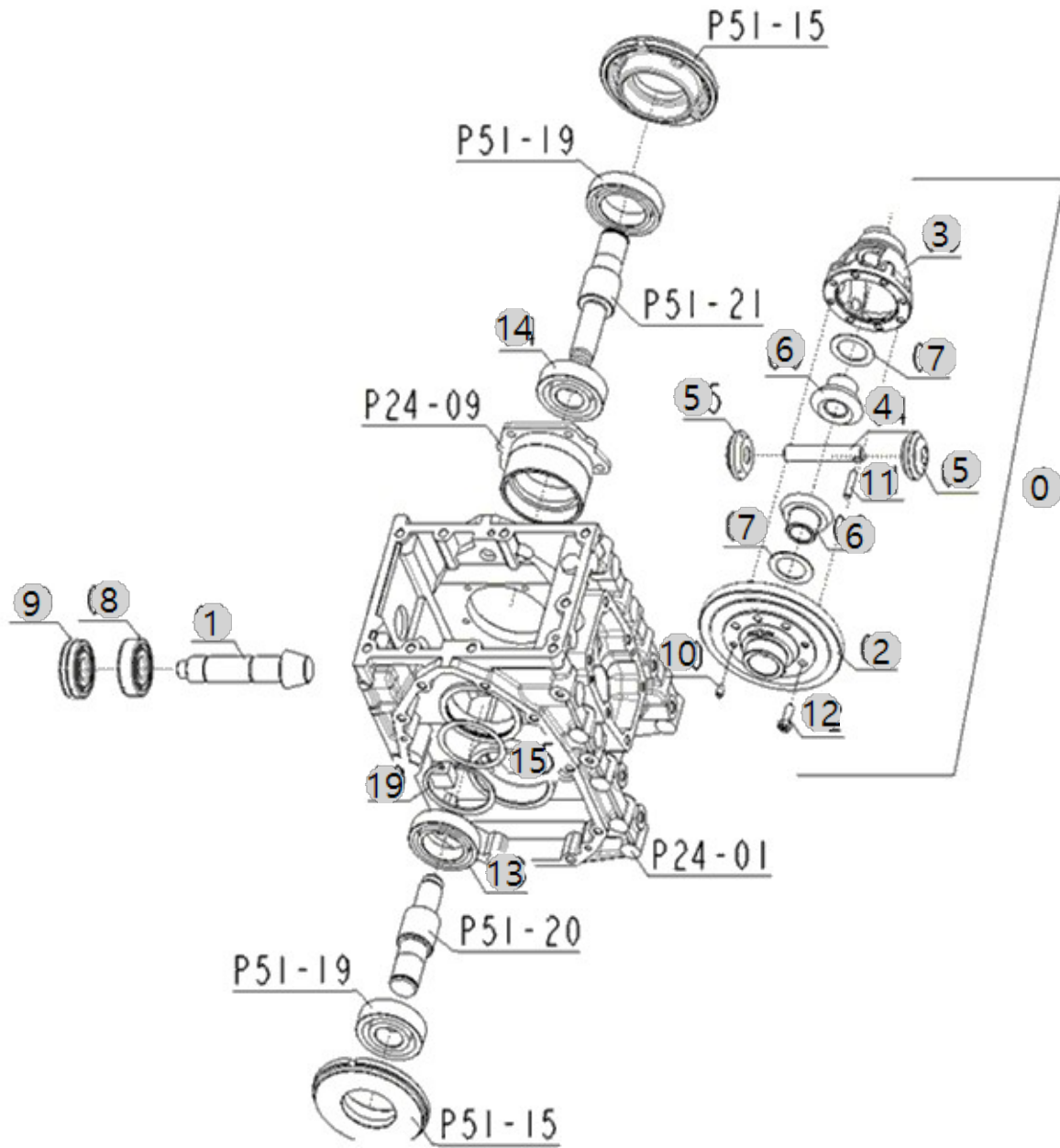
F05020

3100 MANUAL TM
(AC01020)

REAR DIFFERENTIAL

Year/Month

2022-12-16



F05020 3100 MANUAL TM (AC01020)		REAR DIFFERENTIAL				Year/Month
						2022-12-16
순번 (NO)	부품번호 (PART NO)	품명 (PART NAME)	품명 (PART NAME)	수량 (QTY)	규격 (SPEC)	비고 (REMARK)
0	FE41010000E	베벨기어Sub조합	BEVEL GEAR ASS'Y	1		
0	FE41010000C	베벨기어Sub조합	BEVEL GEAR ASS'Y	1		
0	FE41010000D	베벨기어Sub조합	BEVEL GEAR ASS'Y	1		
1	FE41020100A	드라이브 피니언	DRIVE PINION	1		
1	FE41020100B	드라이브 피니언	DRIVE PINION	1		
2	FE41020200B	링기어	RING GEAR	1		
3	FE41030000A	차동케이스	CASE,DIFFERENTIAL -> FE41010000A	1	-	
4	FE41040000B	차동피니언축	SHAFT, DIFF. PINION	1	D16	
5	FE41050000B	차동피니언(12)	PINION, DIFF.	2	-	
6	FE41060000B	차동기어(14)	GEAR, DIFF. SIDE	2	-	
7	FE41070000A	심1.0	SHIM1.0	2	1.0T	
8	24101-063054	볼베어링6305	BALL BEARING #6305	1	#6305	DEL.20220629
9	24121-063054	볼베어링6305NR	BALLBEARING	1	#6305NR	
10	FE41100000A	로크핀	PIN	1	N7X12	
11	FE41110000A	평행핀	PIN	1	D7X33	
12	TC57080000A4	볼트M8X22	BOLT M8X22	6	M8X22	
13	24101-060094	볼베어링6009	Bearing, Ball (#6009)	1	#6009	DEL.20220629
14	24101-060104	볼베어링6010	Bearing, Ball (#6010)	1	#6010	DEL.20220629
15	FE41160000A	차동심0.2	SHIM, DIFF. SIDE	1		
15)1	TA00018029A	차동심 0.1T	SHIM 0.1T	1		
19	22252-000750	구멍용C형스냅링A종	RING, CIRCLIP (Φ 75)	1		

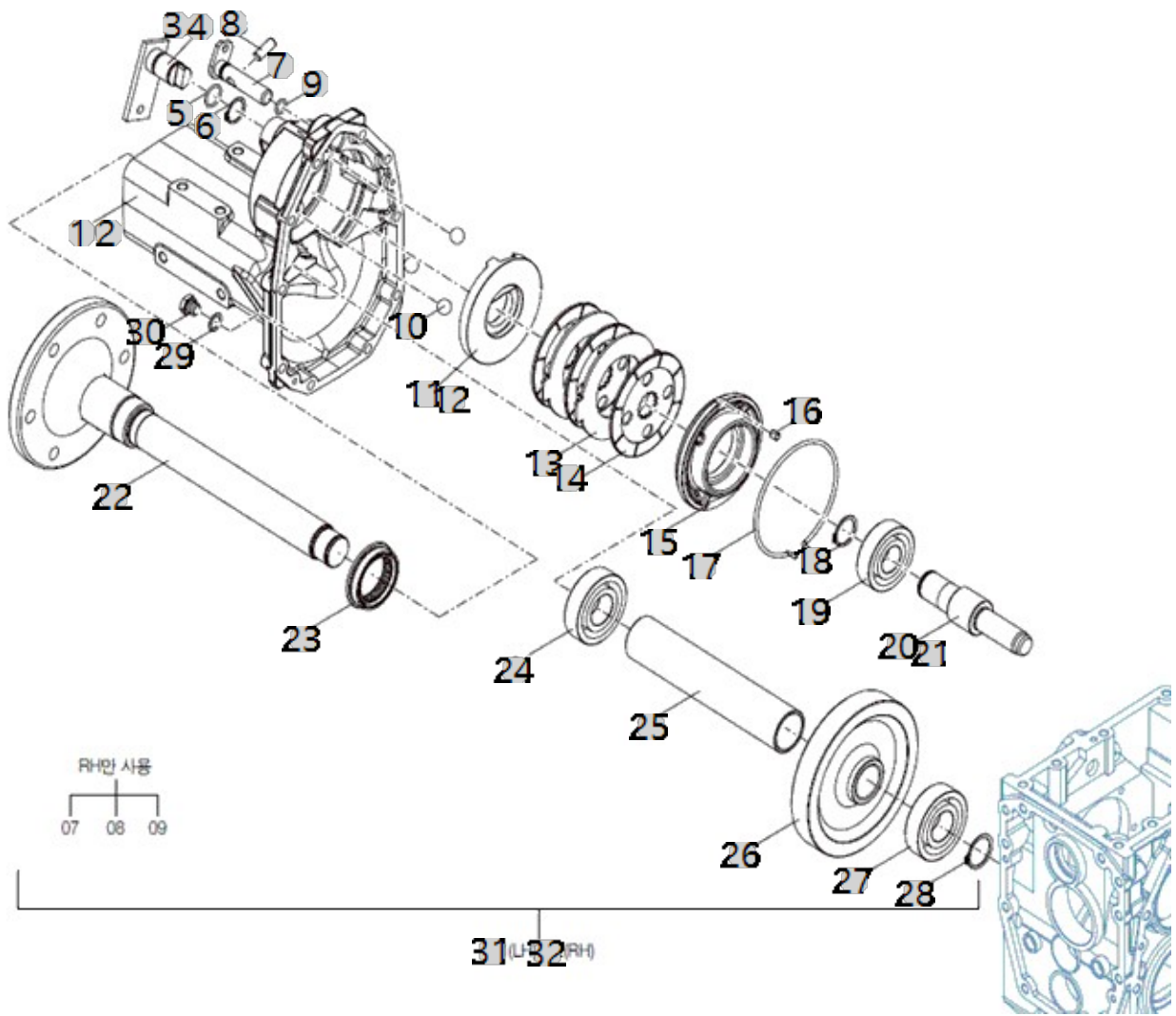
F06000

3100 MANUAL TM
(AC01020)

REAR AXLE ASSY

Year/Month

2022-12-16



F06000 3100 MANUAL TM (AC01020)		REAR AXLE ASSY				Year/Month 2022-12-16
순번 (NO)	부품번호 (PART NO)	품명 (PART NAME)	품명 (PART NAME)	수량 (QTY)	규격 (SPEC)	비고 (REMARK)
1	FE30010000B	후차축케이스(좌)	REAR AXLE CASE, LH	1		
1	FE30010000C	후차축케이스(좌)	REAR AXLE CASE, LH	1		
2	FE30020000B	후차축케이스(우)	REAR AXLE CASE, RH	1		
2	FE30020000C	후차축케이스(우)	REAR AXLE CASE, RH	1		
3	FE57010000A	브레이크 캠레버(좌)	LEVER(L),BRAKE CAM	1		
4	FE57020000A	브레이크캠레버(우)	LEVER(R),BRAKE CAM	1		
5	24311-000210	361,A22,O-RING1AP-21.0	O-RING, DYNAMIC (Φ21)	2	P21	
6	22242-000250	축용스냅링25	SNAP RING, SHAFT (Φ 25)	2	D25	
7	FE55010000B	포크로드	ROD, FORK	1		
7	FE55010000C	포크로드	ROD, FORK	1		
8	22312-100250	평행핀	PIN, DOWEL (10-25)	1	D10X25	
9	24311-000125	O-링 1AP12.5	O-RING, DYNAMIC (Φ12.5)	1	D12.5	
10	24190-200001	강구	Ball, Steel	6		
11	FE57060000A	액츄에이터(좌)	ACTUATOR(L)	1	-	
12	FE57070000A	액츄에이터(우)	ACTUATOR..	1		
13	FE57080000A	브레이크마찰판	Plate, Brake Friction	6		
14	FE57090000A	플레이트	Plate, Brake Iron	4	2.0T	
15	FE57100000A	베어링홀더	HOLDER,BEARING	2		
16	FE57110000A	핀	PIN	2	N8X9.3	
17	FE57120000A	클립	CLIP	2	D4.0	
18	22242-000300	축용스냅링30	SNAP RING, SHAFT (Φ 30)	2	D30	
19	24101-063064	볼베어링6306	Bearing, Ball (#6306)	2	#6306	DEL.20220629
20	FE41200000A	차동기어축(좌)	SHAFT(L),DEFFENTIAL GEAR	1	-	
21	FE41210000A	차동기어축(우)	SHAFT(R),DIFFERENTIAL GEAR	1		
22B	TA00039489B	후차축	REAR SHAFT	2		
23	FE56070000A	오일실 (특수) 50x68x11.5/16	SEAL,OIL	2	50X68X11.5/1	
24	24101-062084	볼베어링6208	Bearing, Ball (#6208)	2	#6208	DEL.20220629
25	FE56050000A	칼라 152	COLLAR 152	2	D48.6X3.5T	
26	FE56040000A	기어(57)	GEAR(57)	2	-	
26	FE56040000B	기어(57)	GEAR	1	-	
27	24101-063074	볼베어링6307	Bearing, Ball (#6307)	2	#6307	DEL.20220629
28	22242-000350	축용스냅링35	SNAP RING, SHAFT (Φ 35)	2	D35	
29	TA00036405A	본디드실(M20)	BONDED SEAL	2		
30	TA00065959A	마그넷 플러그	PLUG, MAGNET	2		
31B	TA00056815D	후차축 조립(LH,3100)	REAR SHAFT ASSY(LH,3100)	1		
31B	TA00056815C	후차축 조립(LH,3100)	ASS'Y, REAR SHAFT(LH,3100)	1		
31B	TA00056815E	후차축 조립(LH,3100)	ASS'Y, REAR SHAFT(LH,3100)	1		
32B	TA00056816D	후차축 조립(RH,3100)	ASS'Y, REAR SHAFT(RH,3100)	1		
32B	TA00056816C	후차축 조립(RH,3100)	ASS'Y, REAR SHAFT(RH,3100)	1		
32B	TA00056816E	후차축 조립(RH,3100)	ASS'Y, REAR SHAFT(RH,3100)	1		

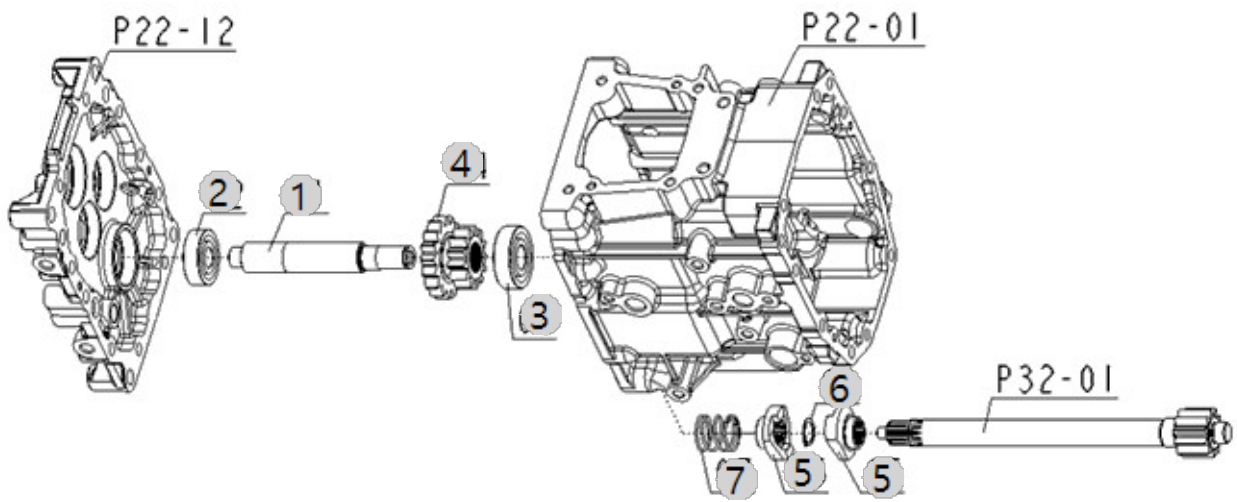
F07030A

3100 MANUAL TM
(AC01020)

PTO DRIVE SHAFT

Year/Month

2022-12-16



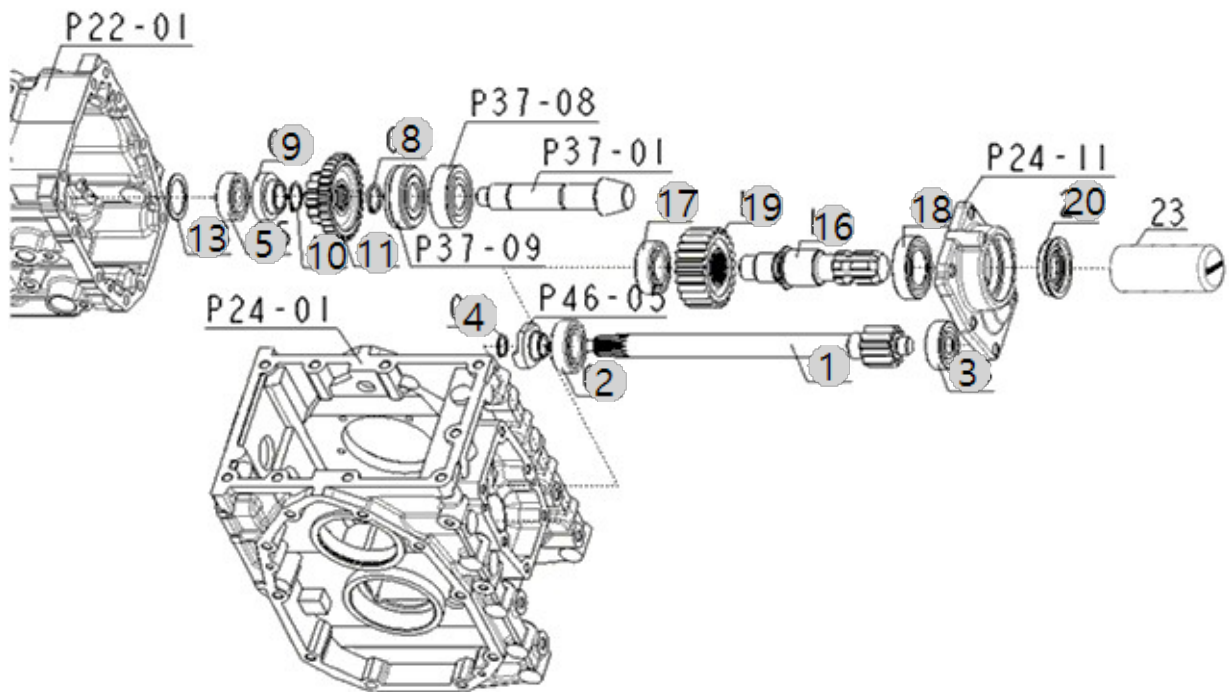
F07070A

3100 MANUAL TM
(AC01020)

PTO SHAFT

Year/Month

2022-12-16



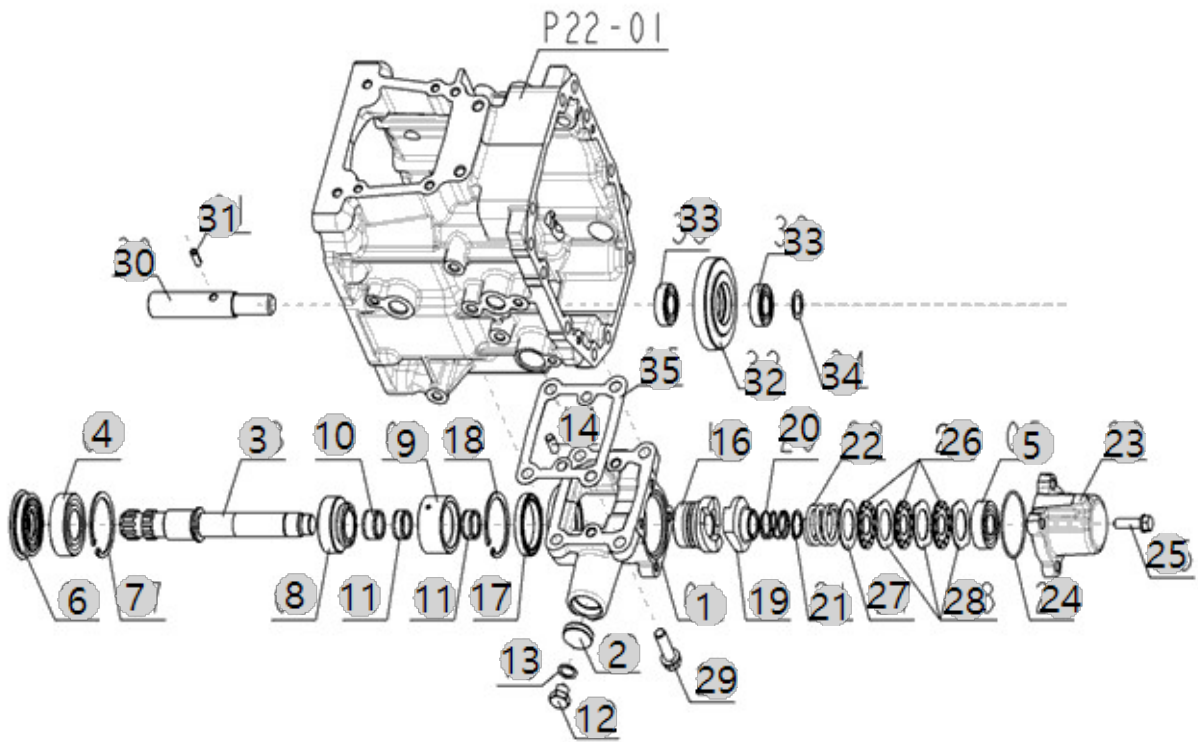
F07080A

3100 MANUAL TM
(AC01020)

MID PTO

Year/Month

2022-12-16



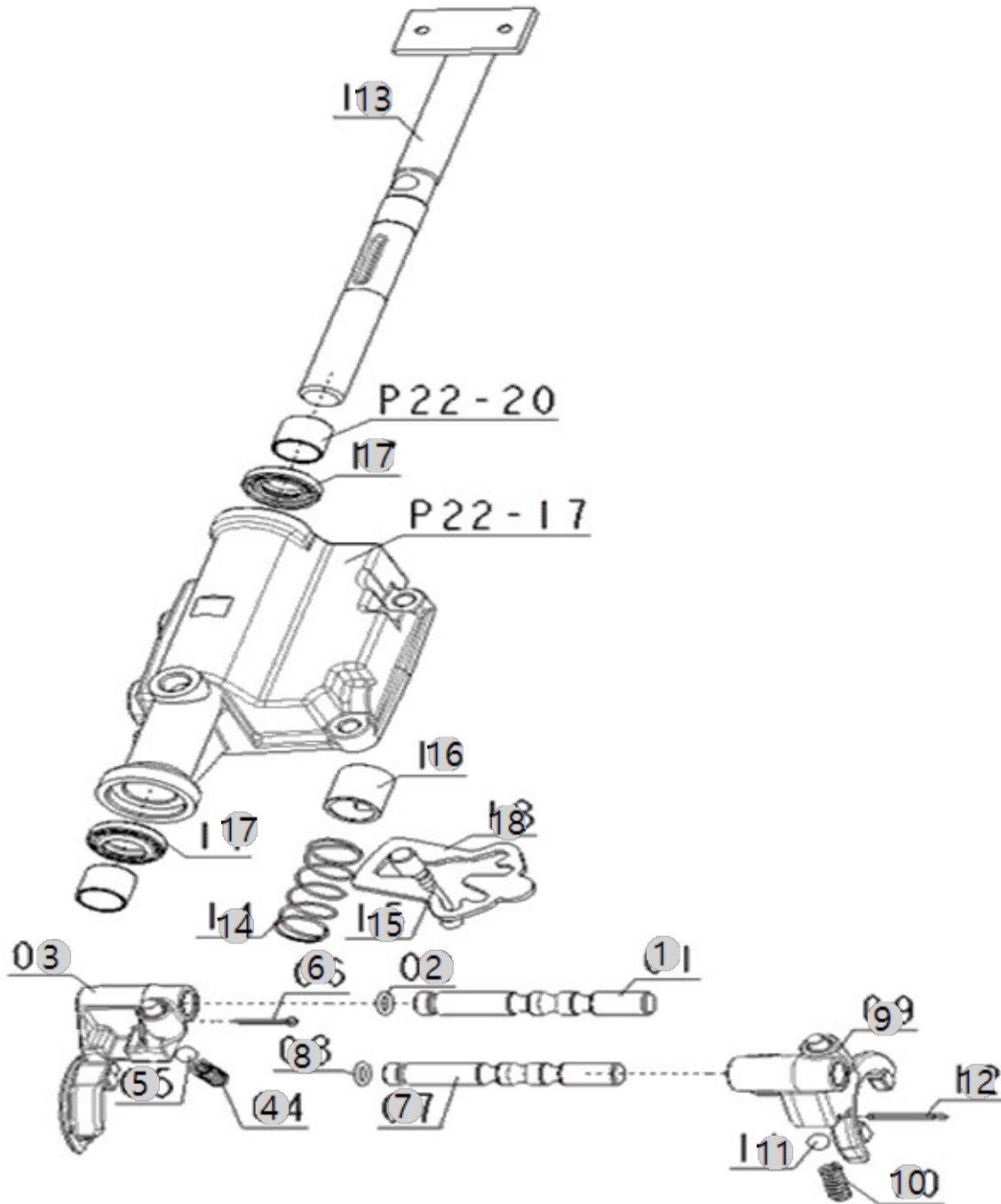
F08021

3100 MANUAL TM
(AC01020)

MAIN GEAR SHIFT FORK

Year/Month

2022-12-16



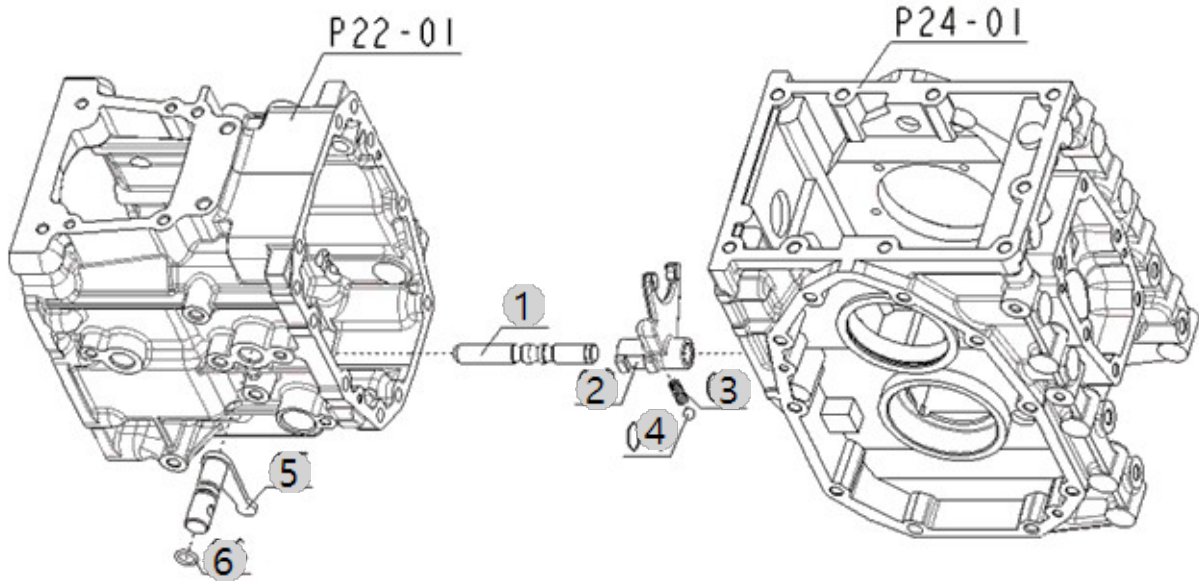
F08022

3100 MANUAL TM
(AC01020)

RANGE GEAR SHIFT FORK

Year/Month

2022-12-16



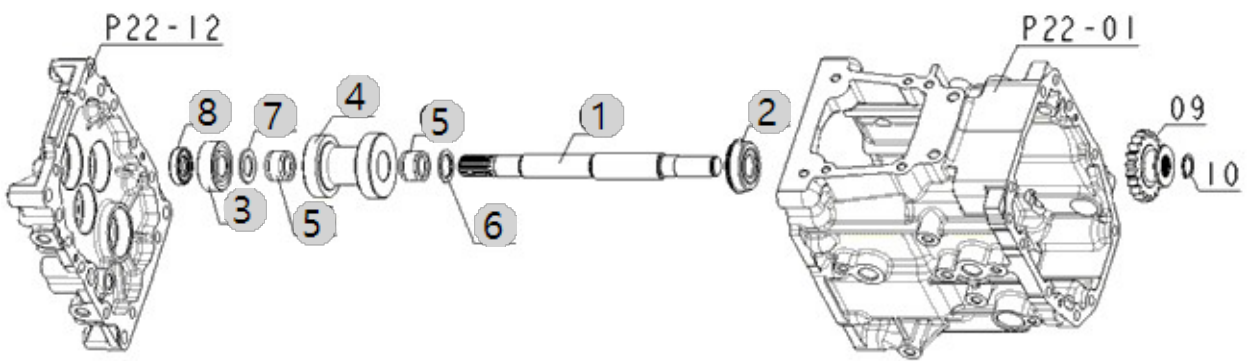
F08040A

3100 MANUAL TM
(AC01020)

4WD FORK

Year/Month

2022-12-16



F08040A 3100 MANUAL TM (AC01020)	4WD FORK	Year/Month
		2022-12-16

순번 (NO)	부품번호 (PART NO)	품명 (PART NAME)	품명 (PART NAME)	수량 (QTY)	규격 (SPEC)	비고 (REMARK)
1	FE42010000B	4WD, 축	SHAFT, 4WD	1	-	
2	24121-062044	볼베어링6204NR	BEARING	1		
3	24101-062044	볼베어링6204	Bearing, Ball (#6204)	1	#6204	DEL.20220629
4	FE42040000C	후진기어(16-20)	GEAR, REVERSE	1	-	
4	FE42040000D	후진기어(16-20)	GEAR, REVERSE	1	-	
5	24161-222817	니들베어링	NEEDLE BEARING	2	232824	
6	FE42060000B	칼라	COLLAR	1	2.0T	
6	FE42060000C	칼라	COLLAR	1	2.0T	
7	FE42070000A	칼라	COLLAR	1	2.0T	
8	FE42080000A	오일실(특수)20x35x8	SEAL,OIL	1	20X35X8	
9	FE42090000A	4WD기어(20)	GEAR,4WD(20)	1	-	
9	FE42090000B	4WD기어(20)	GEAR, 4WD	1	-	
10	22242-000190	축용스냅링19	SNAP RING, SHAFT (Φ 19)	1	D19	

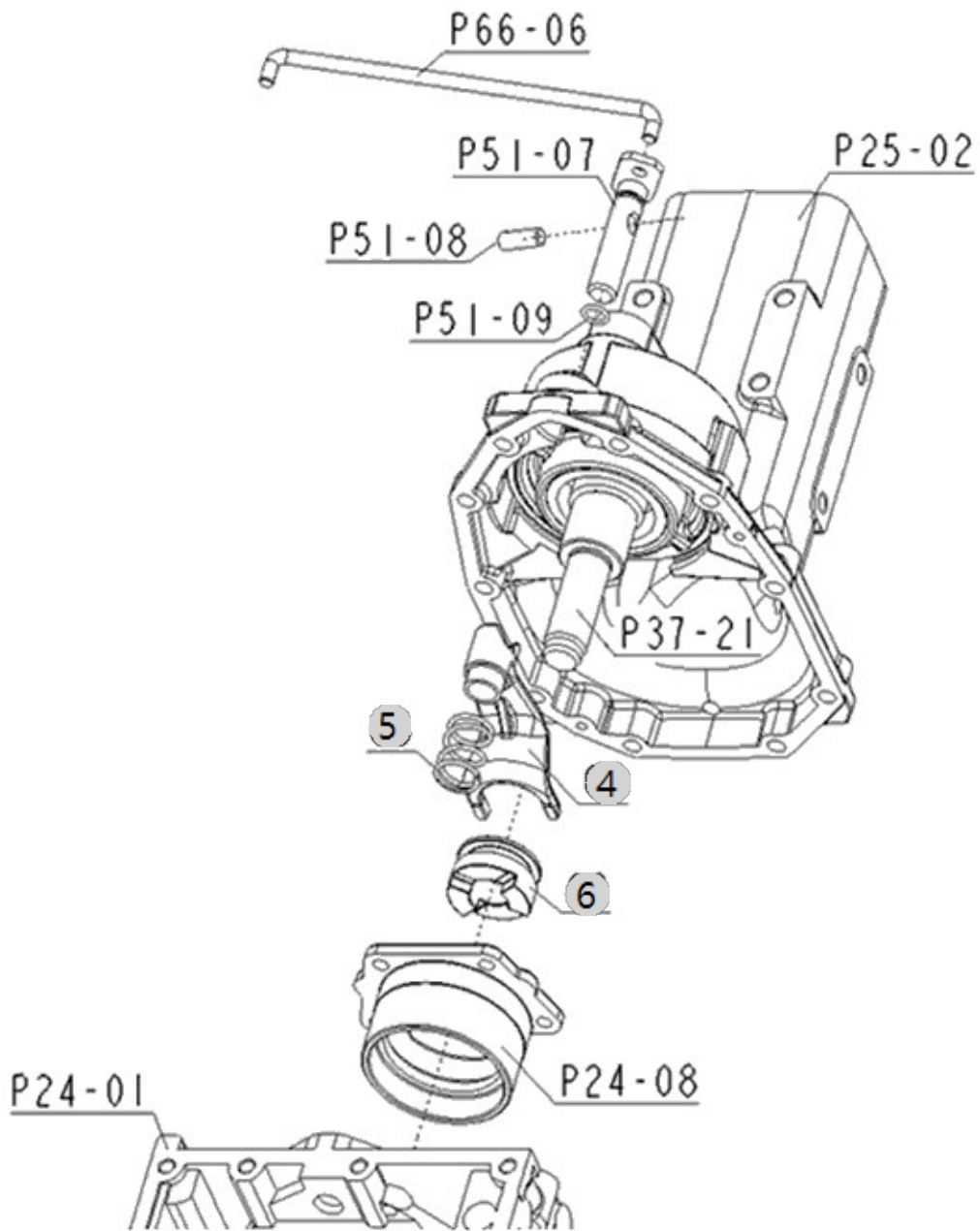
F08050

3100 MANUAL TM
(AC01020)

DIFFERENTIAL LOCK SHIFT FORK

Year/Month

2022-12-16



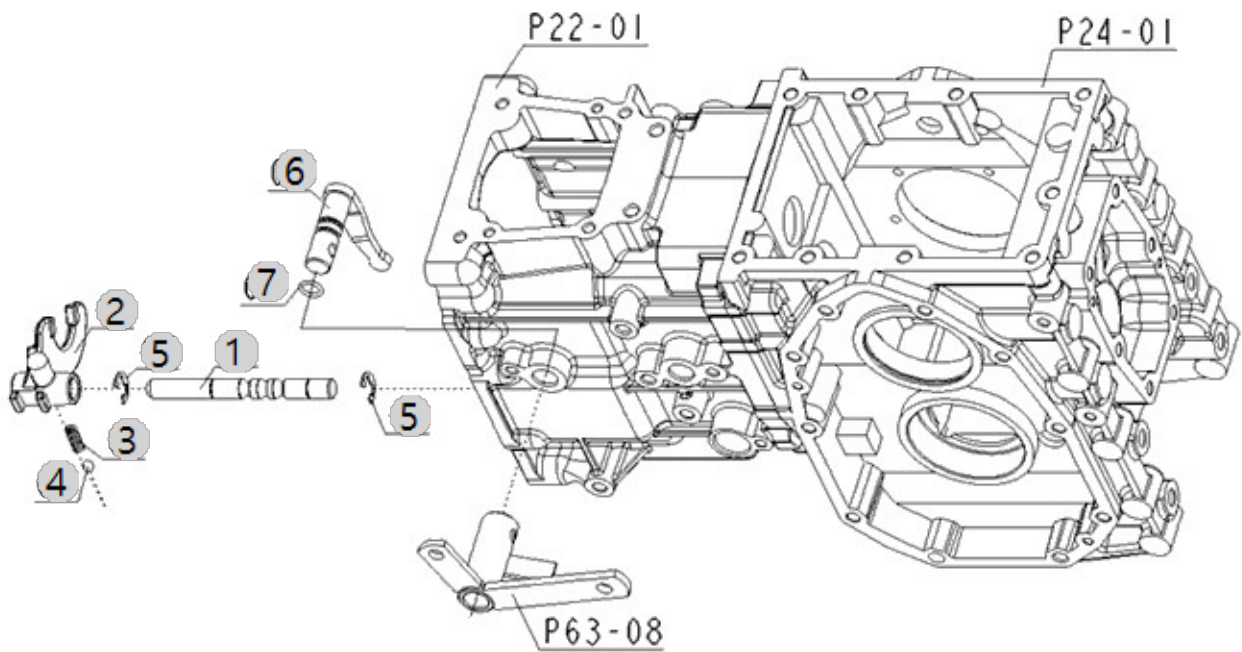
F08060A

3100 MANUAL TM
(AC01020)

PTO GEAR SHIFT FORK

Year/Month

2022-12-16



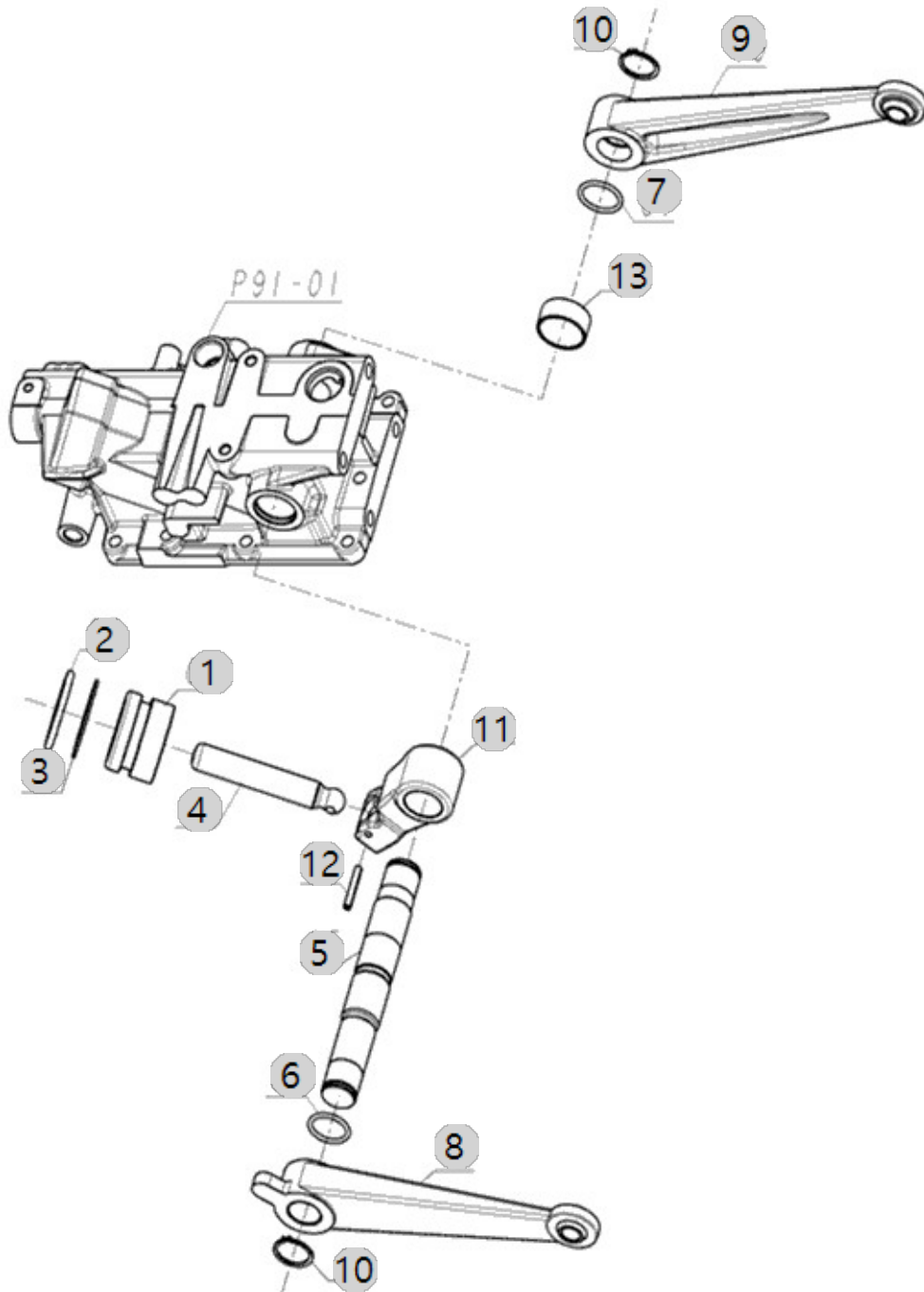
F10020

3100 MANUAL TM
(AC01020)

LIFT ARM

Year/Month

2022-12-16



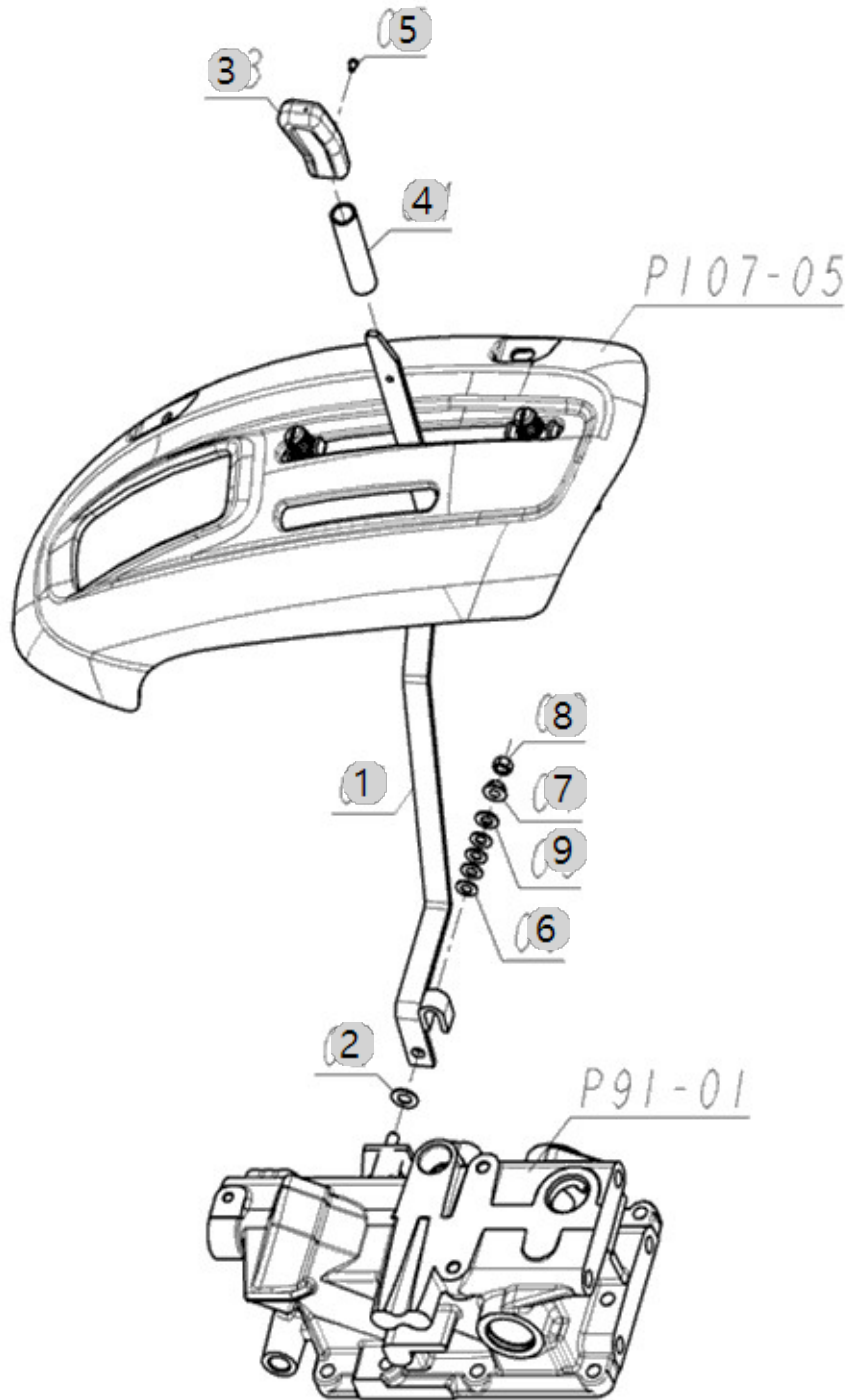
F10064

3100 MANUAL TM
(AC01020)

POSITION CONTROL LEVER

Year/Month

2022-12-16



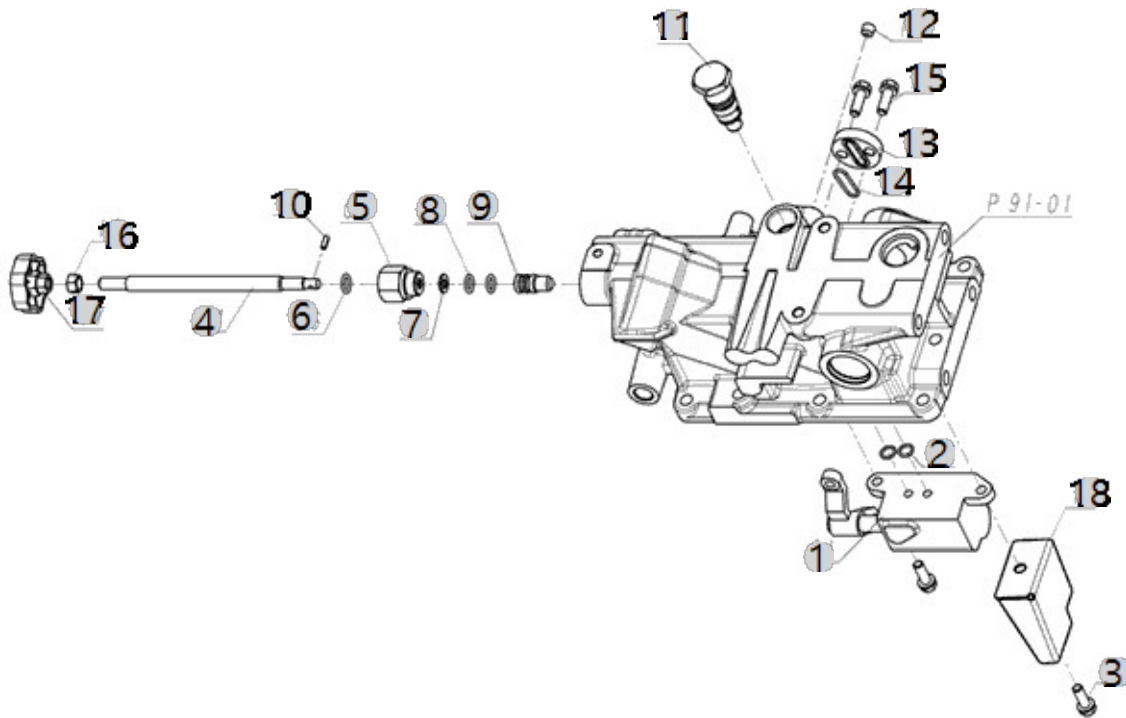
F10080

3100 MANUAL TM
(AC01020)

HYD VALVE

Year/Month

2022-12-16



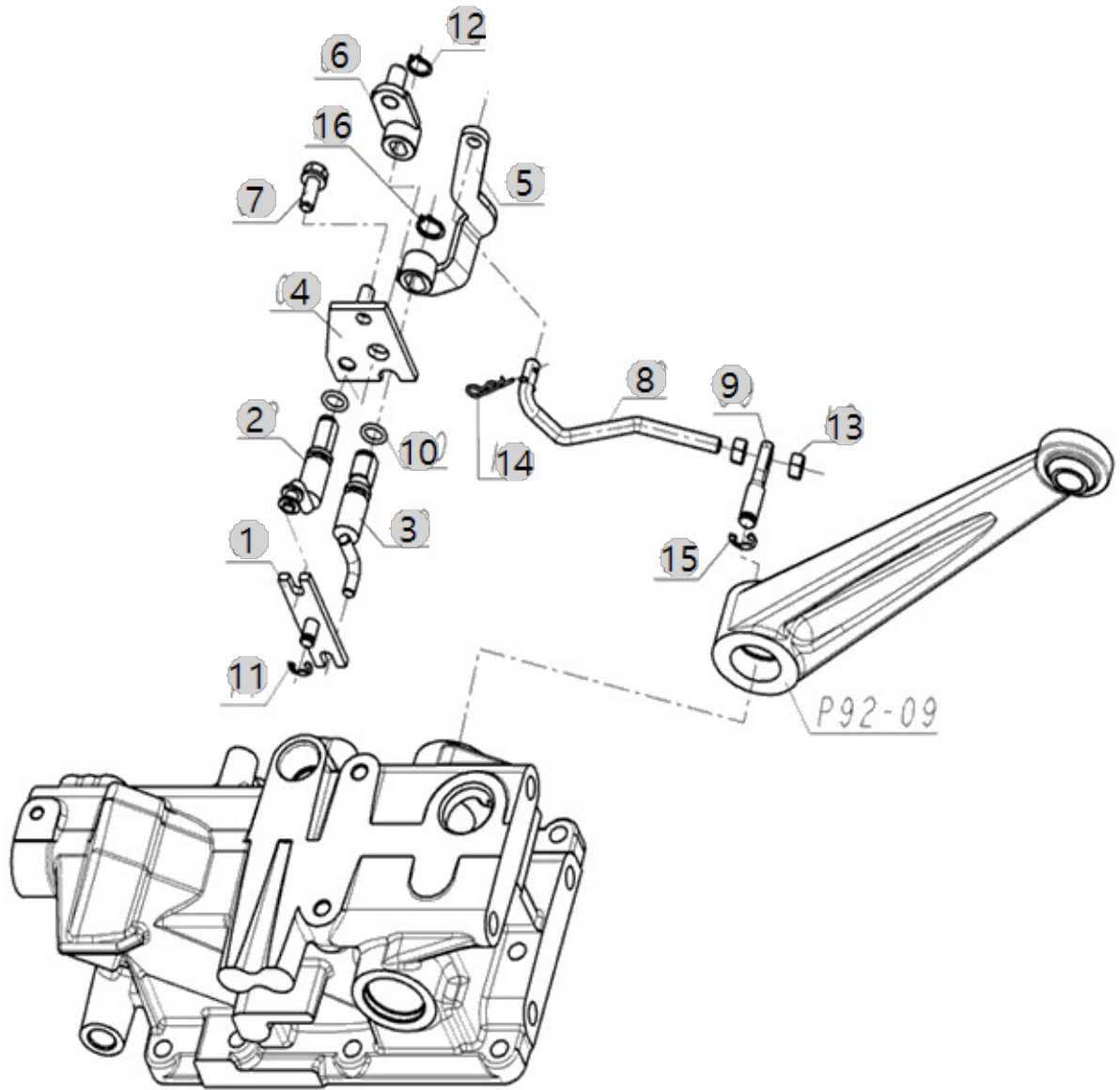
F10090

3100 MANUAL TM
(AC01020)

FEED BACK LEVER- POSITION

Year/Month

2022-12-16



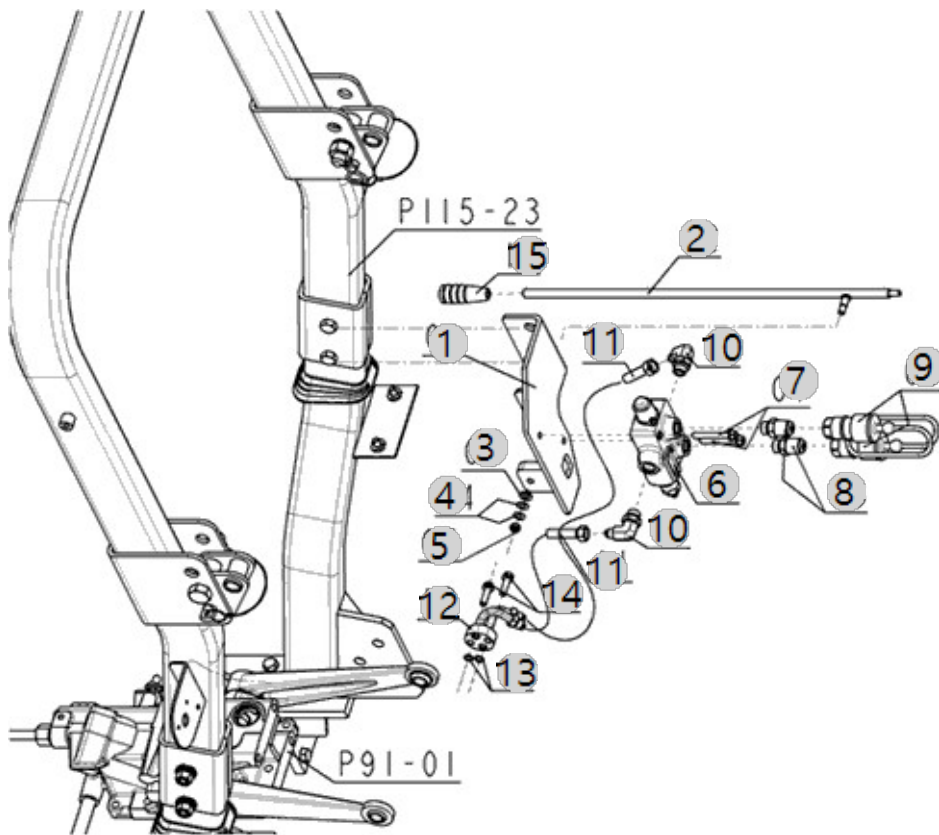
F10120A

3100 MANUAL TM
(AC01020)

REAR SCV(2PORT)

Year/Month

2022-12-16



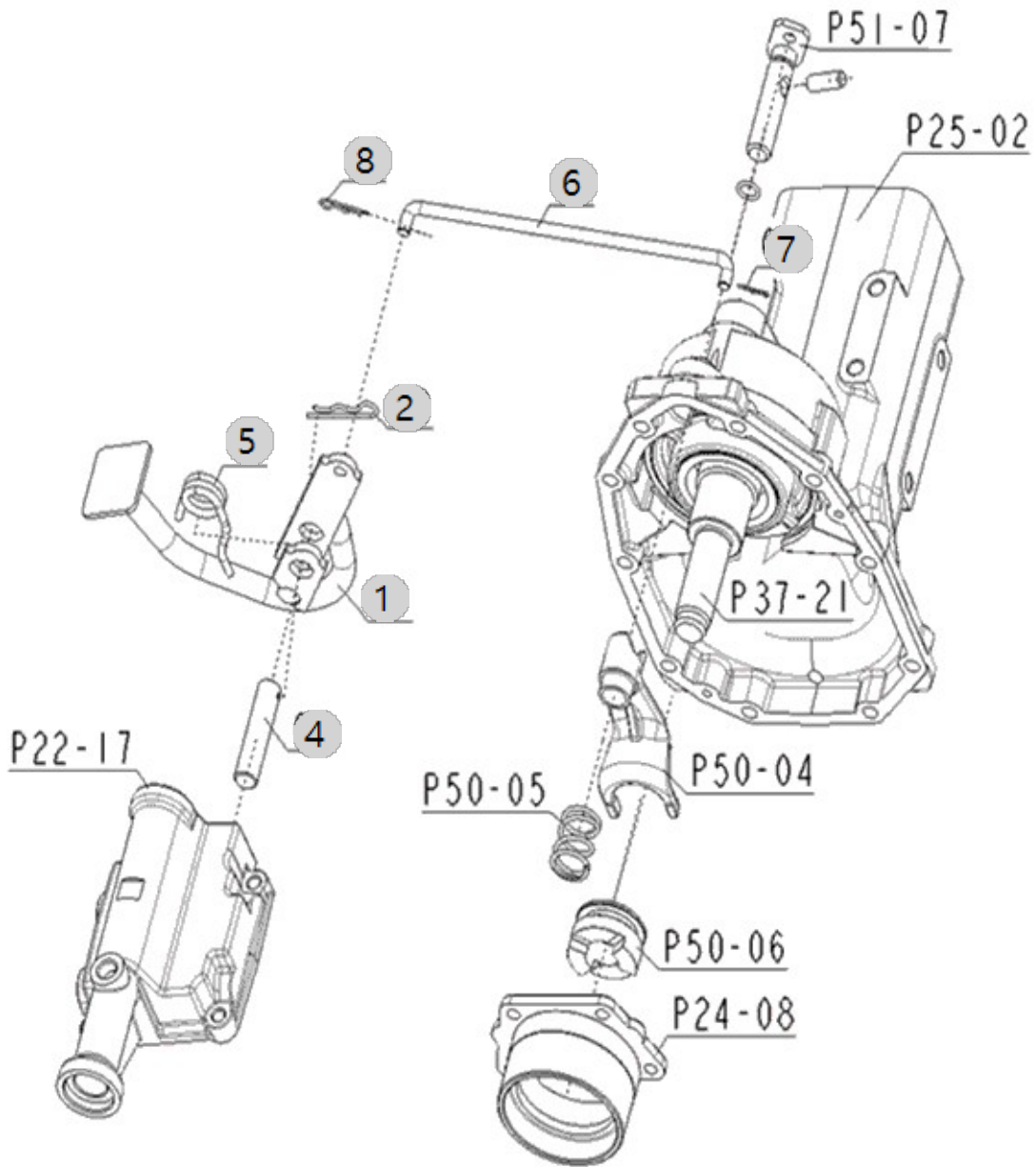
F11060

3100 MANUAL TM
(AC01020)

DIFFERENTIAL LOCK PEDAL

Year/Month

2022-12-16



F11080

3100 MANUAL TM
(AC01020)

FRONT WHEEL DRIVE LEVER

Year/Month

2022-12-16

