

T115

Utility, Series 5
111 hp



Packed with features to help accomplish your goals

Take utilization to the next level with one of the largest TYM tractors. The T115 is equipped to tackle the toughest of jobs with maximized productivity.



1. Refined hood design



2. LED Dual side mirrors



3. Digital instrument panel



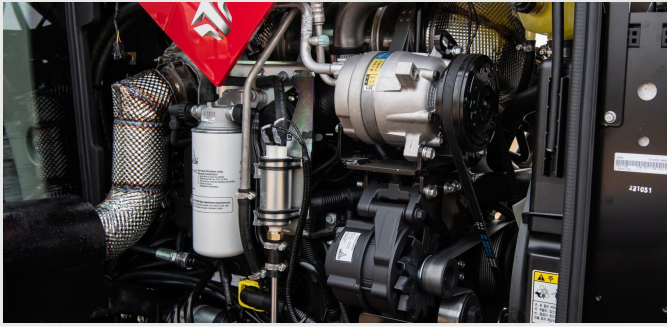
4. Battery shut-off switch



5. Electronic Floor-mount pedal



6. Side & rear LED work lights



Powered by DEUTZ engine, Delivering exceptional productivity and efficiency

Built with precision German engineering, the turbo charged Deutz TCD3.6L engine offer high power and enhanced torque for maximum work efficiency. Their longer lifespan and high reliability makes them an ideal choice to boost productivity.



Premium Cabin

The comfort of the cabin space is crucial for ensuring operational efficiency. That is why we have applied a simple and easy-to-use control system to the T115 tractor. Additionally, a variety of interior convenience features creates a driver-oriented cabin space.



D Clutch/ Powershift main shift lever

Easily shift gears with a single button on the main shift lever without stepping on the clutch pedal, allowing for smooth and precise shifting.



Smart key with remote start

Start the tractor and control the rear hitch remotely with a touch of a button on the smart key.



LCD monitor & rear camera

The interior-mounted LCD monitor and the rear cameras provide a clear view of the rear attachment for added convenience.



6-port external rear remotes and hydraulic top link

2 separate remotes for the top link means that all 6 external rear remotes can be used to mount a variety of attachments. External top link buttons make attaching and detaching attachments easy.

Technical specifications

ENGINE	
Engine manufacturer	Deutz TCD 3.6L4-C5VT83E
Type	Turbo charger
Gross engine power	111 hp
PTO power	109 hp 80 kW
Rated engine speed	2200 rpm
No. of cylinders	4
Displacement	221 cu. in. 3621.5 cc
Air cleaner	Dual Dry
Alternator	12V, 120A
Fuel system	CRDI
POWERTRAIN	
Transmission type	Power Shuttle / Hi-Lo shift
No. of speeds	F32 x R32 w/Creep
Max. traveling speed	23.1 mph 37.2 km/h
Brakes	Wet, Multi-disc
Steering	Hydrostatic
Clutch	Wet, multi-plate
CAPACITIES	
Fuel tank	31.7 gal 120 L
Coolant	19.1 qt 18.1 L
Crankcase	2.1 gal 8 L
Transmission/Hydraulics system	23.8 gal 90.1 L
Front axle	4.6 gal 17.4 L

PTO	
PTO type	Independent
PTO control	Electro-hydraulic
PTO rear	540/540E/1000 rpm (Reversible shaft)
HYDRAULIC SYSTEM	
Pump type	Dual Gear Pump
Implement flow	14.3 gpm 54.1 lpm
Steering flow	7.1 gpm 26.9 lpm
Total flow	21.4 gpm 81 lpm
Category, 3-point hitch	II
Hitch lift capacity	7295 lb 3309 kg
Hitch lift capacity at 24 inches behind link ends	6007.6 lb 2725 kg
Lift control type	Position/Draft
No. of standard remote valves	6
DIMENSIONS & WEIGHTS	
Overall length with 3-point hitch	175.2 in. 4450.1 mm
Overall width	89.4 in. 2270.8 mm
Wheelbase	93.7 in. 2380 mm
Height to top of cabin	112.2 mm 2850 mm
Min. ground clearance	16.7 in. 424.2 mm
Min. turn radius with brakes	134.3 in. 3411.2 mm
Min. turn radius without brakes	161 in. 4089.4 mm
Weight with cab	8940 lb 4055.1 kg
STANDARD TIRES	
Agricultural - Front	13.6-24
Agricultural - Rear	18.4-34

TL110SL Front-End Loader

Attachments

Engineered to lift higher and lift heavier materials, the TYM TL110SL is optimized for superior material handling. Taking advantage of the power and performance of the TYM utility tractors, the TL110SL is compatible with the T115.



Lift height	162 in. / 4114 mm
Lift capacity	5415 lb / 2456 kgf
Self leveling	Available

CAPACITIES & REACH	
Lift height	162 in. 4114 mm
Max. lift height under level bucket	152.5 in. 3873 mm
Clearance with bucket dumped	127 in. 3227 mm
Reach at maximum lift height	14.9 in. 379 mm
Max. dump angle	60°
Reach with bucket on ground	98.9 in. 2513 mm
Max. rollback angle	52°
Digging depth	6.1 in. 155 mm
Lift capacity	5415 lb 2456 kgf
Breakout force at ground level, pivot points	6618 lb 3002 kgf
Bucket rollback force at ground line	6874 lb 3118 kgf
Self leveling	Available
Relief valve setting (Loader control valve)	2987 psi 210 kg/sq. cm

DIMENSIONS & WEIGHTS	
Overall height in carry position	86.4 in. 2194 mm
Depth of Attachment (to the back of the inner shell)	22.8 in. 579 mm
Height of Attachment	22.2 in. 563 mm
Length of Attachment (to pivot point)	34.9 in. 886 mm
Weight of boom & quick attach mechanism (1)	1210 lb 549 kg
Weight of mounting frame (2)	591 lb 268 kg
Weight of bucket (3)	448 lb 203 kg
Loader total weight (1+2+3)	2249 lb 1020 kg
Lift cylinder	3.1x1.8 in. 80x45 m
Bucket cylinder	3.0x1.6 in. 75x40 m
Attachment used for specification	92 in. 2330 mm
CYCLE TIMES	
Boom raising time	4.4 sec
Boom lowering time	2.8 sec
Bucket rollback time	2.6 sec
Bucket dumping time	3.6 sec



Designed for your world

TYM creates tractors that bring together alluring form, advanced function and accessible value. Through Korean expertise in design, engineering and manufacturing, the company helps owners overcome every obstacle as they shape the world around them.

Headquartered in Korea with distribution across North America, Europe, and Asia, and assembly operations in the USA, TYM has been empowering customers for over 70 years.

www.tym.world